



*Harrow L.G.
Branch*

*Harrow L.G. Branch
UNISON Office
Central Depot, Forward Drive
Harrow, Middlesex
HA3 8NT
Tel: 020 8424 1795
Fax: 020 8424 1835*

*Email: info@harrow-unison.org.uk
Web: www.harrow-unison.org.uk*

Branch Secretary: sharon@harrow-unison.org.uk

13th June 2007

Employees Consultative Forum 3/7/2007

Unison raised concern about a number of service issues in summer 2006 on the Health & Safety concerns was removal of asbestos during building works in the proposed Access Harrow Area.

We submit:

- 1) The asbestos management plan prior to the building works showing four asbestos panels above doors in partitions.
Extracts from the Asbestos Consultants Report.
- 2) Plan B 3191 which does not show the previously identified asbestos panels.
- 3) Data sheet with photography showing Room 1 after site clearance dated 24 October 2005 (Page 13 of 40) which does not show previously mentioned asbestos panels.
- 4) Page 39 of 40 analysis test sheet detailing 9 sites sampled and where asbestos panels above doors were not mentioned dated 31 October 2005

We need to know what happened to the asbestos panels (item 1 above) when the removal took place and by whom.

Was the HSE inspector shown the asbestos consultants report in full and shown the previous management plan (item 1 above)

We need to know whether the remaining asbestos has been properly identified, labelled and are covered by the current asbestos management plan to avoid a future incident.

If staff and public were exposed to asbestos they need to be contacted and informed that they are at risk

One is a lonely number, join UNISON and you're one in a million.....

We make the following points:

- 1) Asbestos was used significantly throughout the building construction in 1973 as a fire insulation.
- 2) Typically such insulation may contain 10-15% asbestos and this could have included mixtures of the 3 known asbestos types.
- 3) A number of panels were removed for which there are "missing" records and or confusion about what was removed, where it was removed, where it was stored prior to disposal and the disposal details.
- 4) Staff and public were in the vicinity of the removal works when they were carried out and may have been injured/exposed.
- 5) Health & Safety Guidance/Regulations current at the time were contravened.

Unison have a moral obligation to their members to inform them of any situation that has occurred at their place of work which affects their Health & Safety.

We will be publishing these facts in the next edition of Network unless they are categorically disproved.

Mary Cawley, Health & Safety Officer, Unison
Bob Thomas, Health & Safety Convenor Unison

BULK SAMPLE ANALYSIS TEST CERTIFICATE

No: B-03191


Client Contact:
Mr Ged Housley

Blues Consultants Ltd Contact:
Jeff Watts

 Paragon Interiors Group PLC
Paragon House
Orchid Place
Nottingham Business Park
Nottingham
NG8 6PX

 Blues Consultants Ltd
4 Duckett's Wharf
South Street
Bishop's Stortford
Hertfordshire
CM23 3AR

 Tel: 0115 951 9512
Fax: 0115 951 9513

 Tel: 01279 503117
Fax: 01279 503162

Site: Civic Centre
Station Road
Harrow
HA1 2UY

Date Sampled/Received: 24 October 2005 by Jeff Watts

No.	Item	Material	Location/Comments	Asbestos Result
1	Fire Break	Board	Room 1	NAD
2	Ducting	Mastics	Room 1	Chrysotile (white)
3	Ducting	Debris	Room 1	NAD
4	Floor	Floor Tiles	Room 1	Chrysotile (white)
5	Pipework	Debris	Room 8	NAD
6	Infill panel	Board	Corridor	Amosite (brown) Chrysotile (white)
7	Floor	Debris	Electric's Cupboard	NAD
8	Floor	Vinyl	Strong Room	Chrysotile (white)
9	Ceiling	Textured Coating	Reception Area	Chrysotile (white)

Analysts Name: Dom Lee

Signature:

Analysts Name: Khem Nath Dhakal

Signature:

Test Date: 31st October 2005

TEST NOTES: Samples submitted for examination have been analysed to determine the presence of asbestos fibres using the methods documented in the HSG248 The Analyst Guide For Sampling Analysis and Clearance Procedures & in house procedures in section 13 of the quality manual.

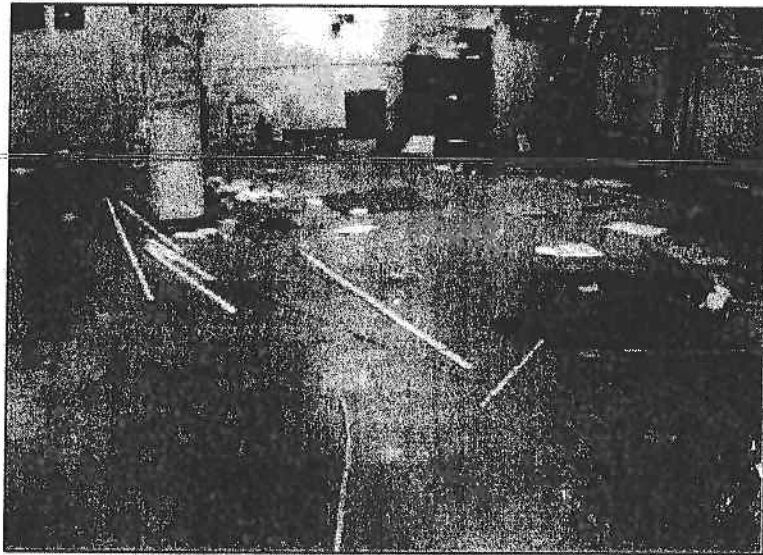
Analysis carried out at head office laboratory Bishop's Stortford.



Page 39 of 40

Lead Surveyor	Jeff Watts
Survey Type	Type 3
Survey Date	24 October 2005
Next Inspection	24 April 2006
Level of Identification	Sampled

Building	Civic Centre
Floor	0
Room/Area	001 - Room 1
Sample No	4
Laboratory Ref	

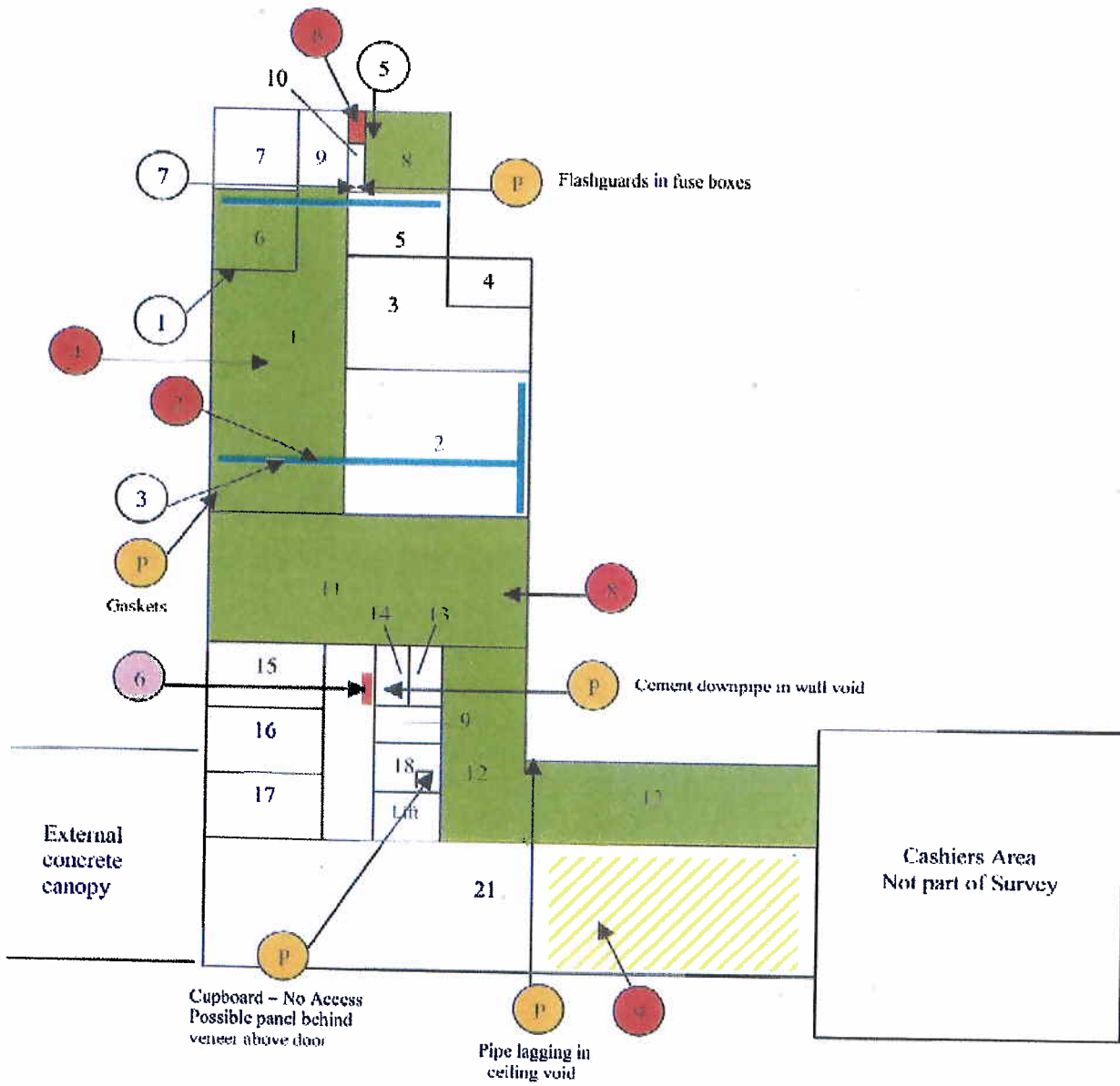


Description Item: Floor.

		Score
Product Type	Floor Tiles	
Extent of Damage		
Surface Treatment		
Asbestos Type	Chrysotile (white)	
Amount	100m ²	
Accessibility	Routinely Disturbed	
Algorithm Score		

RECOMMENDATION	Label & manage / Remove if to be disturbed
-----------------------	--

Harrow Civic Centre, Station Road, Harrow (B-3191)

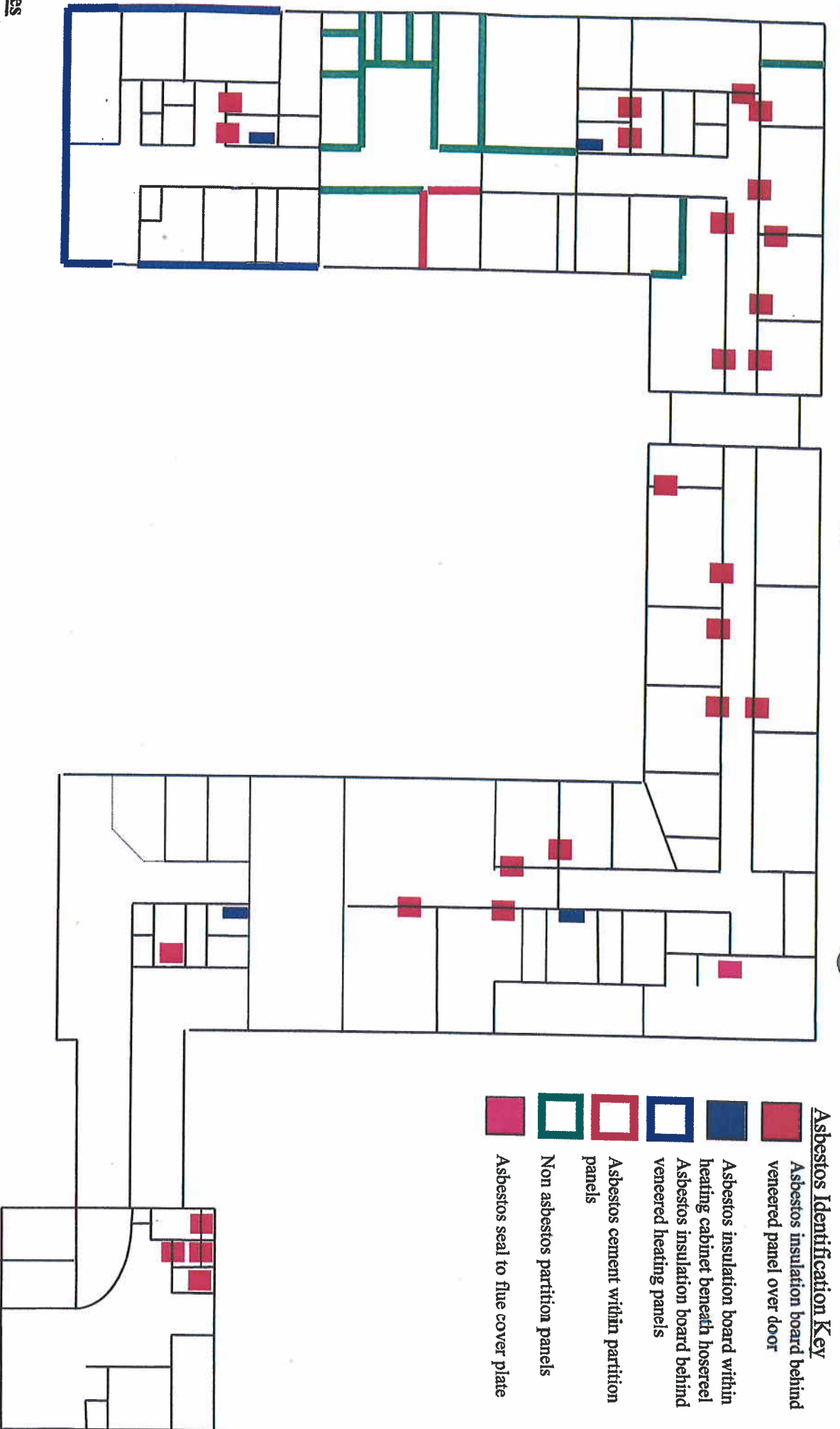


Key:	
●	Sample Location – Asbestos Detected
 	Sample Location – No Asbestos Detected
P	Presumed Asbestos Location – Visual ID
 	Cross Reference to Asbestos Sample
AIB – Asbestos Insulating Board	
	Asbestos (AIB) infill panel above heater
	Asbestos mastic joints to ducting
	Asbestos floor tiles and backing
	Asbestos textured coating to ceiling







CIVIC CENTRE - MAIN BUILDING

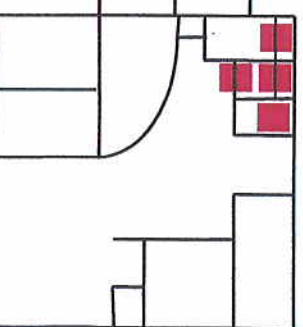
Lower Ground Floor

Not to Scale



Asbestos Identification Key

-  Asbestos insulation board behind veneered panel over door
-  Asbestos insulation board within heating cabinet beneath hose reel
-  Asbestos insulation board behind veneered heating panels
-  Asbestos cement within partition panels
-  Non asbestos partition panels
-  Asbestos seal to flue cover plate



Notes

- 1) An indication in this report of the presence of asbestos in specific locations does not exclude the presence of undiscovered asbestos in other locations.
- 2) A negative analysis result does not indicate that similar materials adjacent to the specific test site do not contain asbestos.
- 3) In the absence of other information pipe insulation within ducts or boiler rooms must be suspected of containing asbestos.
- 4) Check established Asbestos Management Plan on site with Building Manager before commencing work.
- 5) These notes must be copied to the Consultant and Contractor as appropriate before works commence.